



### Applications

The **Smart-Sense Room Control** application provides precise environmental zone control for temperature, fan speed, lightings and sunblinds with the following controller applications :

- Fan coil units
- Roof top units
- Heat pumps
- Unit ventilators
- Lighting and sunblind applications, ...

### Features & Benefits

- Intuitive interface for temperature, fan speed, lighting and blinds remote control
- Up to 4 scenes stored for instant access to your favorite comfort parameters
- ECO-Vue icon to indicate graphically the energy efficiency of the configuration to help the occupant adopt energy conscious behavior and save energy costs
- Occupancy control to extend normal system operating hours for further time flexibility
- Multi-Room management for enhanced adaptability
- Demo Mode so as to discover easily and immediately all the functionalities

### Overview

Thanks to the **Smart-Sense Room Control** free iPhone application, your room settings remain accessible in any circumstances for a full remote control from your iPhone of all the room comfort parameters (occupancy, ventilation, lighting, blinds, temperature and scenarios) for enhanced flexibility and easy management.

Developed from the Allure RS-Smart-Sense Room Device, the **Smart-Sense Room Control** iPhone application presents an optimized interface for an immediate remote control of each comfort parameter as well as instant access to 1 of the 4 memorized configurations.

Each of these 4 different scenarios drive all the working conditions of the room and can be easily programmed to recall specific settings depending on the dedicated use.

Moreover, the programmable ECO-Vue icon illustrates the impact of the user's settings on the global energy efficiency of the building so as to lead him to follow the supervisor's recommendations. It displays more leaves for environmentally friendly energy saving settings and consequently helps to reduce operating costs.

The **Smart-Sense Room Control** application is designed to interface natively with Distech Controls® LON and Bacnet controllers monitored by an EC-BOS. A Demo mode is also available to acquaint yourself with the various functionalities offered.



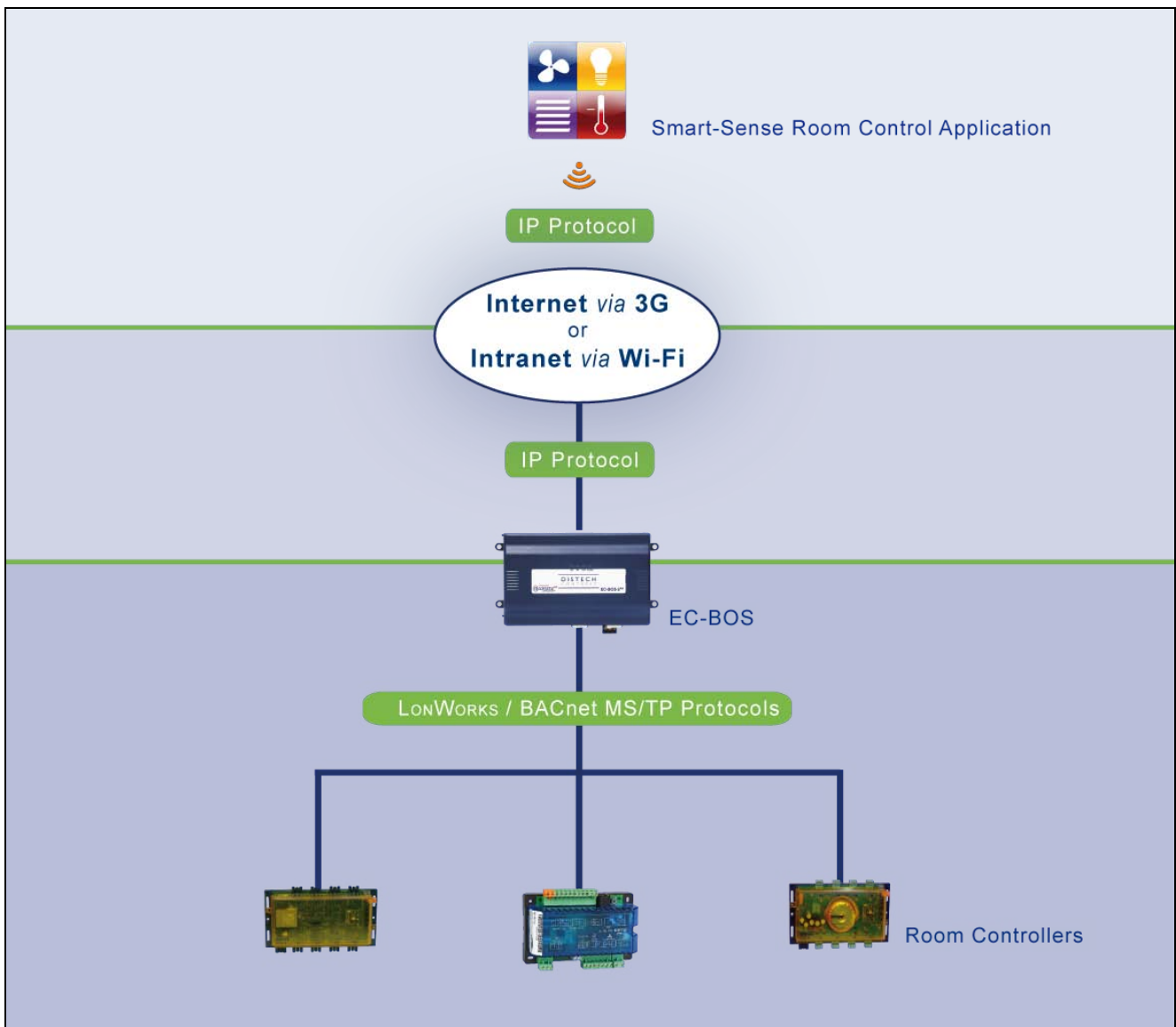
## ECO-Vue Icon

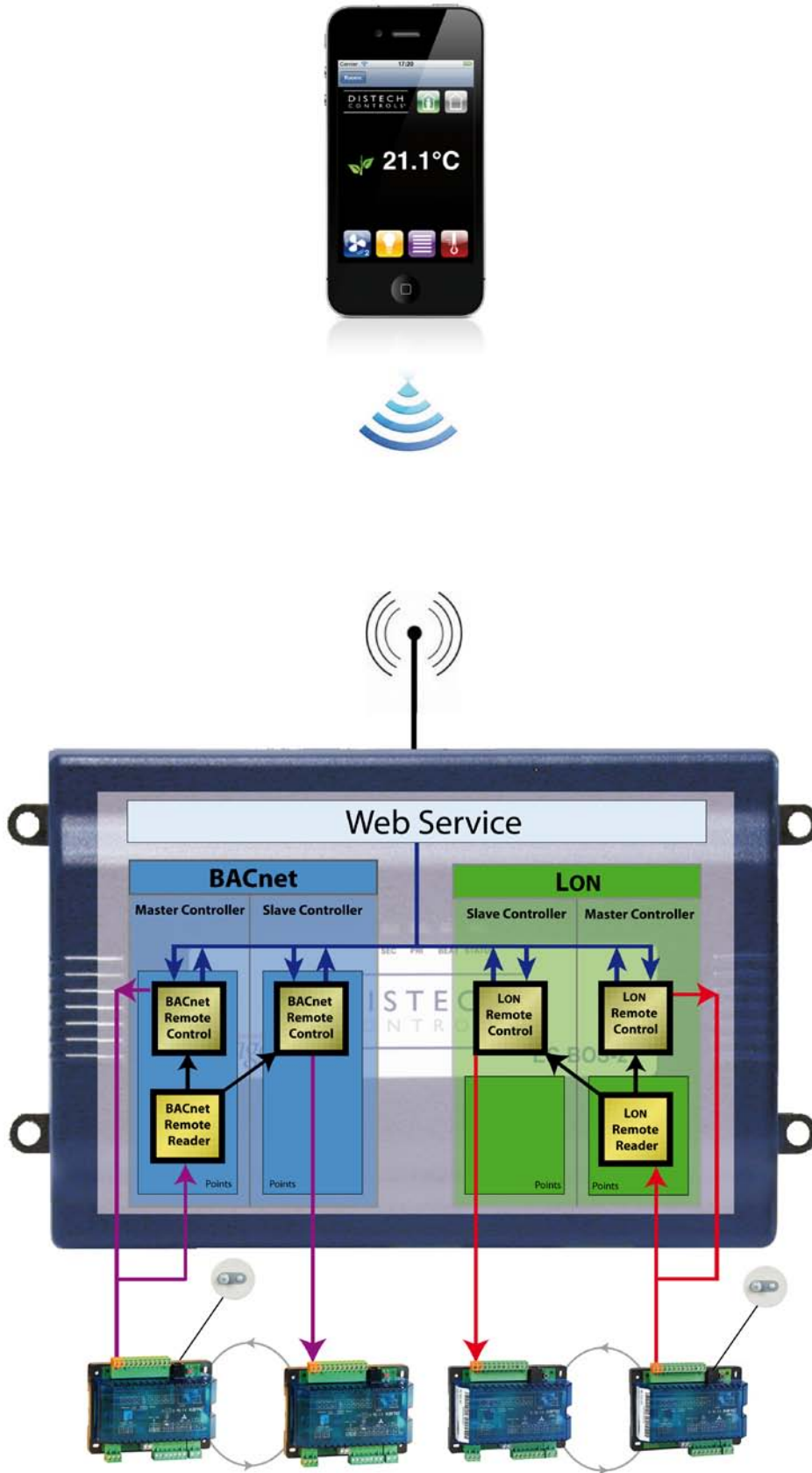
The ECO-Vue icon is designed to encourage the users to follow the supervisor's recommendations. It illustrates the favorable or unfavorable character of the user's choices on the energy-efficiency of the building by displaying the maximum of leaves for close to setpoint manual settings. By default, the ECO-Vue displays the maximum of leaves when following the programmed settings and the minimum for the further temperature setpoint and the maximum fan speed to promote thermal homogeneity in the building so as to reduce the associated operating costs. Nevertheless, the ECO-Vue icon is fully programmable through ECnet<sup>AX</sup> software to fit your own needs.



Energy efficiency of the room according to the building settings (see User Guide)

## Typical Architecture





## Allure RS-Smart-Sense



The Allure RS-Smart-Sense is Distech Controls' new generation room sensor from which the Smart-Sense Room Control iPhone application has been developed. Its additional features lead it to become the ideal room device for any need in any configuration.

Directly connected to a controller, the Allure RS-Smart-Sense can do without the EC-BOS to provide all the functionalities offered by the iPhone application, and even more, including a technician mode for a plug-and-play installation and easy maintenance and troubleshooting.

Last but not least, the Allure RS-Smart-Sense's aspect is fully customizable to fulfill the most demanding aesthetic needs.

Main additional features :

- Wide range of front plates
- Customizable pictograms
- Wide touch-sensitive LCD colored screen: 3,2"
- Automatic dimming backlit adjustment depending on the ambient lighting
- Plug-and-play connection to a controller through a single RJ9/RJ9 digital cable
- Technician Mode to manage the controller's parameters for easy integration, maintenance and troubleshooting

## Related products

### Controller/Server Platform



EC-BOS-2 <sup>AX</sup>	Web Server for building management systems
EC-BOS-6 <sup>AX</sup>	Web Server for building management systems

### HVAC Controllers



FCC Series	Fan coil controllers
SRC Series	HVAC configurable controllers
IRC Series	Integrated room controllers (with lighting and sunblind management)
SRC-DL Series	Double loop HVAC configurable controllers

### Light And Sunblind Controllers



CTR Lighting Series	230 VAC lighting controllers, 4 or 8 on/off or 1-10VDC dimming outputs HVAC configurable controllers
CTR Sunblind Series	Sunblind controllers, 4 or 8 230VAC or 24VDC outputs
CTR-8LDALI	DALI lighting controllers dedicated to offices : 8 power outputs (16 ballasts managed, divided in 8 groups maximum)
CTR-DALI-LR	DALI lighting controllers dedicated to open spaces : 64 ballasts managed divided in 8 or 16 groups

For more information on Distech Controls products, please refer to our website [www.distech-controls.eu](http://www.distech-controls.eu) or call +33 4 78 45 01 23

## Product Warranty & Total Quality Commitment

All Distech Controls product lines are built to meet rigorous quality standards and carry a two-year warranty. Distech Controls is an ISO 9001 registered company.

## Supported Platforms



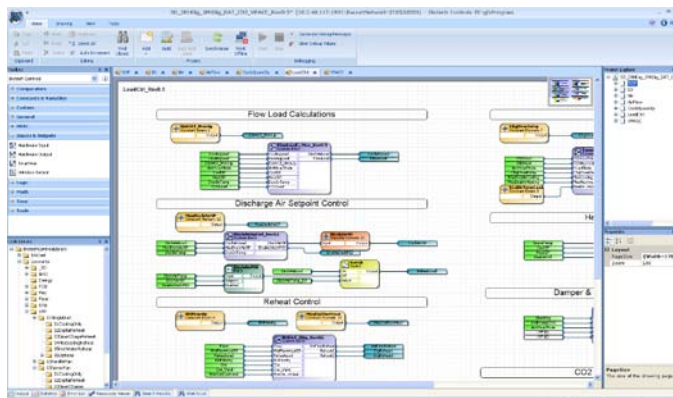
### EC-Net<sup>AX</sup>

EC-Net<sup>AX</sup> is a web-enabled multi-protocol integration solution powered by the Niagara<sup>AX</sup> Framework, establishing a fully Internet-enabled, distributed architecture for real-time access, automation and control of devices. EC-Net<sup>AX</sup>'s open framework creates a common development and management environment for integration of LONWORKS<sup>®</sup>, BACnet<sup>®</sup> and other protocols. Regardless of manufacturer and protocol, the EC-Net<sup>AX</sup> system provides a unified modeling of diverse systems and data, providing one common platform for development, management and enterprise applications.

## EC-Net<sup>AX</sup> Wizards and LNS Plug-Ins

### EC-gfxProgram Graphical Programming Tool

Distech Controls' EC-gfxProgram is a programming tool that allows you to quickly create control sequences by "dragging and dropping" block objects and then linking the objects with a simple "click, select and release". Select objects from an extensive library of over 100 commonly used functions as well as create your own custom blocks. With a user-friendly interface and intuitive programming environment, HVAC programming could not be easier. Refer to the EC-gfxProgram datasheet for more information.



## Product specifications

### Compatible with

iPod Touch  
 iPhone 3  
 iPhone 3GS  
 iPhone 4  
 iPad

### Minimum operating system

iOS 4.0

### Minimum EC-Net<sup>AX</sup> version

3.5.34

### Minimum LON module version

3.5.34.12

### Memory consumption (*indicative*)

LON	Min = 1.945 kRU
	Max = 3.097 kRU
BACnet	Typical = 2.682 kRU

### Connection port

EC-BOS

### Supported languages

English  
 French

### Native compatibilities with LON controllers

CTR-4L	
CTR-4L-4S230	
CTR-4LD	
CTR-4S230	Lighting controllers: ON/OFF or 1-10V dimming
CTR-4S24	
CTR-8L	
CTR-8LD	
CTR-8S24	
CTR-8S230	Sunblind controllers: Up, Down, Rotation
CTR-8LDALI	
CTR-DALI-LR8	Dali lighting controllers
CTR-DALI-LR16	
SRC-4XX	
SRC-4XX-DL	HVAC controllers for Terminal Equipment Management
FCC-4XX	
IRC-SRC-4XX	Modular solution for HVAC, lighting and sunblind management
IRC-FCC-4XX	
ITR	4 Infrared/Radio channels 230 VAC interface

### Native compatibilities with BACnet controllers

IRC-SRC-4XX	Modular solution for HVAC, lighting and sunblind management
IRC-FCC-4XX	

**Specifications subject to change without notice.**

Distech Controls and the Distech Controls logo are trademarks of Distech Controls Inc. ; LonWorks is a registered trademark of Echelon Corporation ; NiagaraAX Framework is a registered trademark of Tridium, Inc. ; ARM Cortex is a registered trademark of ARM Limited ; BACnet is a registered trademark of ASHRAE ; BTL is a registered trademark of the BACnet Manufacturers Association; Windows, Visual Basic.Net are registered trademarks of Microsoft Corporation. EnOcean is a registered trademark of EnOcean GmbH. All other trademarks are property of their respective owner.



O5DI-DSSSRCX-13